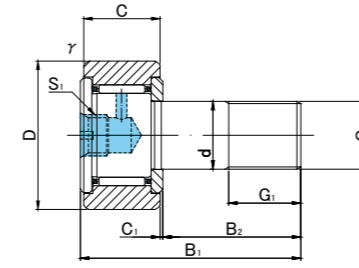


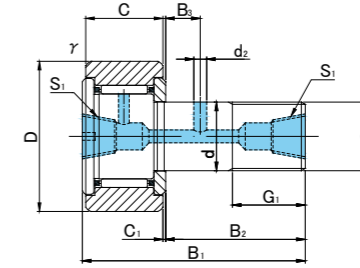
CFT



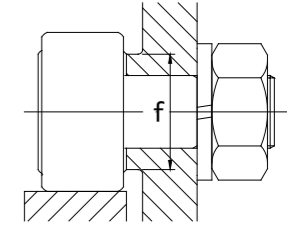
CFT.V



CFT6(V)~CFT10-1(V)



CFT12(V)~CFT18(V)



CFT TYPE

Prepacked Grease


Stud diameter (mm)	h7 tolerance	Designation				Dimensions (mm)														Basic dynamic load rating Cr N	Basic static load rating Cor N	Largest permissible load N	Limiting speed * rpm	Track load capacity		Max tightening torque N·m	Mass g (approx)
		Cylindrical outer ring		Crowned outer ring R500(CF6 ~ CF18)		D	C	d	G	G1	B1	B2	B3	C1	S1	d2	r _s min	f min	Cylindrical outer ring N					Crowned outer ring N			
		Without seals	With seals	Without seals	With seals																						
6	0 -0.012	CFT 6	CFT 6UU	CFT 6R	CFT 6UUR	16	11	6	M6×1	8	28	16	—	0.6	M6×0.75	—	0.3	11	3 630	3 630	2 110	25 000	3 430	1 080	3	18.5	
		CFT 6V	CFT 6VUU	CFT 6VR	CFT 6VUUR														6 960	8 530	2 110	12 000					
8	0 -0.015	CFT 8	CFT 8UU	CFT 8R	CFT 8UUR	19	11	8	M8×1.25	10	32	20	—	0.6	M6×0.75	—	0.3	13	4 310	4 710	4 710	20 000	4 020	1 370	8	28.5	
		CFT 8V	CFT 8VUU	CFT 8VR	CFT 8VUUR														8 130	11 170	4 710	9 000					
10	0 -0.015	CFT10	CFT10UU	CFT10R	CFT10UUR	22	12	10	M10×1.25	12	36	23	—	0.6	M6×0.75	—	0.3	15	5 390	6 860	6 860	17 000	4 700	1 670	15	45	
		CFT10V	CFT10VUU	CFT10VR	CFT10VUUR														9 510	14 500	7 450	7 500					
10	0 -0.015	CFT10-1	CFT10-1UU	CFT10-1R	CFT10-1UUR	26	12	10	M10×1.25	12	36	23	—	0.6	M6×0.75	—	0.3	15	5 390	6 860	6 860	17 000	5 490	2 060	15	60	
		CFT10-1V	CFT10-1VUU	CFT10-1VR	CFT10-1VUUR														9 510	14 500	7 450	7 500					
12	0 -0.018	CFT12	CFT12UU	CFT12R	CFT12UUR	30	14	12	M12×1.5	13	40	25	6	0.6	M6×0.75	3	0.6	20	7 940	9 800	9 800	14 000	7 060	2 450	22	95	
		CFT12V	CFT12VUU	CFT12VR	CFT12VUUR														13 430	19 700	11 270	6 000					
12	0 -0.018	CFT12-1	CFT12-1UU	CFT12-1R	CFT12-1UUR	32	14	12	M12×1.5	13	40	25	6	0.6	M6×0.75	3	0.6	20	7 940	9 800	9 800	14 000	7 450	2 740	22	105	
		CFT12-1V	CFT12-1VUU	CFT12-1VR	CFT12-1VUUR														13 430	19 700	11 270	6 000					
16	0 -0.018	CFT16	CFT16UU	CFT16R	CFT16UUR	35	18	16	M16×1.5	17	52	32.5	8	0.8	Rc1/8	3	0.6	24	12 050	18 330	18 330	10 000	11 200	3 140	58	170	
		CFT16V	CFT16VUU	CFT16VR	CFT16VUUR														20 680	37 630	19 800	4 500					
18	0 -0.018	CFT18	CFT18UU	CFT18R	CFT18UUR	40	20	18	M18×1.5	19	58	36.5	8	0.8	Rc1/8	3	1	26	14 700	25 200	25 200	8 500	14 400	3 720	87	250	
		CFT18V	CFT18VUU	CFT18VR	CFT18VUUR														25 280	51 350	26 560	3 500					

* Without seals, suitable for grease lubrication. In case of oil lubrication, up to 130% of this value shall be permissible, and 70% of this value shall apply for types with seals.

OUTER RINGS TOLERANCE (µm)

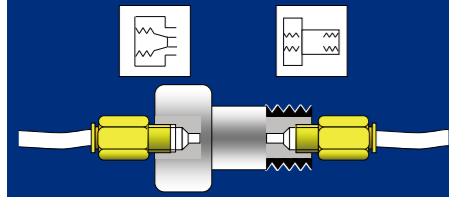
TYPE	Cylindrical outer ring	Crowned outer ring
CF6	0/-8	0/-50
CF8,CF10,CF10-1,CF12	0/-9	0/-50
CF12-1,CF16,CF18,CF20-1	0/-11	0/-50
CF20,CF24,CF24-1,CF30	0/-13	0/-50
CF30-1,CF30-2	0/-15	0/-50

ACCESSORIES

TYPE	
All types	 NUT Attached

CAM FOLLOWERS

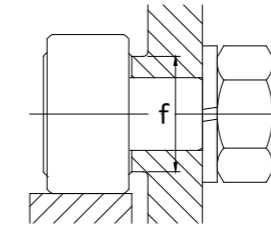
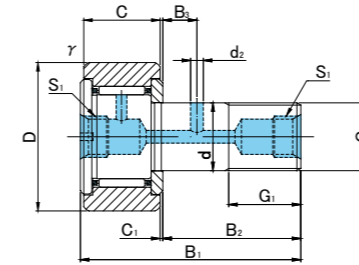
TAP HOLE FOR PIPING
SCREWDRIVER SLOT HEAD



CFT



CFT.V



CFT TYPE

Prepacked Grease

Stud diameter (mm)	h7 tolerance	Designation				Dimensions (mm)														Basic dynamic load rating Cr N	Basic static load rating Cor N	Largest permissible load N	Limiting speed * rpm	Track load capacity		Max tightening torque N·m	Mass g (approx)
		Cylindrical outer ring		Crowned outer ring R1000(CF20 ≤)		D	C	d	G	G1	B1	B2	B3	C1	S1	d2	r _s min	f min	Cylindrical outer ring N					Crowned outer ring N			
		Without seals	With seals	Without seals	With seals																						
20	0 -0.021	CFT20	CFT20UU	CFT20R	CFT20UUR	52	24	20	M20×1.5	21	66	40.5	9	0.8	Rc1/8	4	1	36	20 680	34 600	32 140	7 000	23 200	8 230	120	460	
		CFT20V	CFT20VUU	CFT20VR	CFT20VUUR														33 120	64 480	32 140	3 500					
20	0 -0.021	CFT20-1	CFT20-1UU	CFT20-1R	CFT20-1UUR	47	24	20	M20×1.5	21	66	40.5	9	0.8	Rc1/8	4	1	36	20 680	34 600	32 140	7 000	21 000	7 150	120	385	
		CFT20-1V	CFT20-1VUU	CFT20-1VR	CFT20-1VUUR														33 120	64 480	32 140	3 500					
24	0 -0.021	CFT24	CFT24UU	CFT24R	CFT24UUR	62	29	24	M24×1.5	25	80	49.5	11	0.8	Rc1/8	4	1	40	30 480	52 630	49 500	6 500	34 200	10 500	220	815	
		CFT24V	CFT24VUU	CFT24VR	CFT24VUUR														46 550	92 020	49 500	3 000					
24	0 -0.021	CFT24-1	CFT24-1UU	CFT24-1R	CFT24-1UUR	72	29	24	M24×1.5	25	80	49.5	11	0.8	Rc1/8	4	1	40	30 480	52 630	49 500	6 500	39 800	12 900	220	1 140	
		CFT24-1V	CFT24-1VUU	CFT24-1VR	CFT24-1VUUR														46 550	92 020	49 500	3 000					
30	0 -0.021	CFT30	CFT30UU	CFT30R	CFT30UUR	80	35	30	M30×1.5	32	100	63	15	1	Rc1/8	4	1	46	45 370	85 060	73 700	5 000	52 600	14 900	450	1 870	
		CFT30V	CFT30VUU	CFT30VR	CFT30VUUR														67 620	144 060	73 700	2 200					
30	0 -0.021	CFT30-1	CFT30-1UU	CFT30-1R	CFT30-1UUR	85	35	30	M30×1.5	32	100	63	15	1	Rc1/8	4	1	46	45 370	85 060	73 700	5 000	56 000	56 000	450	2 030	
		CFT30-1V	CFT30-1VUU	CFT30-1VR	CFT30-1VUUR														67 620	144 060	73 700	2 200					
30	0 -0.021	CFT30-2	CFT30-2UU	CFT30-2R	CFT30-2UUR	90	35	30	M30×1.5	32	100	63	15	1	Rc1/8	4	1	46	45 370	85 060	73 700	5 000	59 300	59 300	450	2 220	
		CFT30-2V	CFT30-2VUU	CFT30-2VR	CFT30-2VUUR														67 620	144 060	73 700	2 200					

* Without seals, suitable for grease lubrication. In case of oil lubrication, up to 130% of this value shall be permissible, and 70% of this value shall apply for types with seals.

OUTER RINGS TOLERANCE (μm)

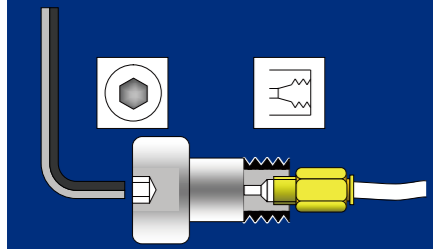
TYPE	Cylindrical outer ring	Crowned outer ring
CF6	0/-8	0/-50
CF8,CF10,CF10-1,CF12	0/-9	0/-50
CF12-1,CF16,CF18,CF20-1	0/-11	0/-50
CF20,CF24,CF24-1,CF30	0/-13	0/-50
CF30-1,CF30-2	0/-15	0/-50

ACCESSORIES

TYPE	
All types	NUT Attached

CAM FOLLOWERS

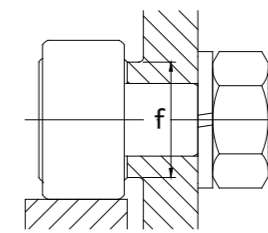
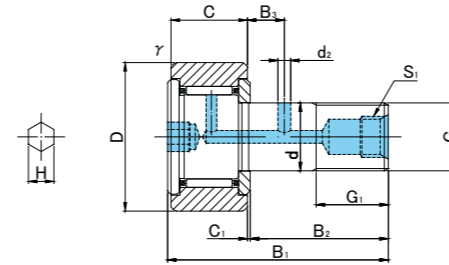
TAP HOLE FOR PIPING
HEXAGON SOCKET ON STUD HEAD



CFT..A



CFT..VA



CFT..A TYPE

Prepacked Grease

Stud diameter (mm)	h7 tolerance	Designation				Dimensions (mm)															Basic dynamic load rating Cr N	Basic static load rating Cor N	Largest permissible load N	Limiting speed * rpm	Track load capacity		Max tightening torque N·m	Mass g (approx)
		Cylindrical outer ring		Crowned outer ring R500(CF12~CF18) R1000(CF20≤)		D	C	d	G	G1	B1	B2	B3	C1	S1	d2	H	r min	f min	Cylindrical outer ring N					Crowned outer ring N			
		Without seals	With seals	Without seals	With seals																							
12	0 -0.018	CFT12A	CFT12UUA	CFT12RA	CFT12UURA	30	14	12	M12×1.5	13	40	25	6	0.6	M6×0.75	3	6	0.6	20	7 940	9 800	9 800	14 000	7 060	2 450	22	95	
		CFT12VA	CFT12VUUA	CFT12VRA	CFT12VUURA															13 430	19 700	11 270	6 000					
12	0 -0.018	CFT12-1A	CFT12-1UUA	CFT12-1RA	CFT12-1UURA	32	14	12	M12×1.5	13	40	25	6	0.6	M6×0.75	3	6	0.6	20	7 940	9 800	9 800	14 000	7 450	2 740	22	105	
		CFT12-1VA	CFT12-1VUUA	CFT12-1VRA	CFT12-1VUURA															13 430	19 700	11 270	6 000					
16	0 -0.018	CFT16A	CFT16UUA	CFT16RA	CFT16UURA	35	18	16	M16×1.5	17	52	32.5	8	0.8	Rc1/8	3	6	0.6	24	12 050	18 330	18 330	10 000	11 200	3 140	58	170	
		CFT16VA	CFT16VUUA	CFT16VRA	CFT16VUURA															20 680	37 630	19 800	4 500					
18	0 -0.018	CFT18A	CFT18UUA	CFT18RA	CFT18UURA	40	20	18	M18×1.5	19	58	36.5	8	0.8	Rc1/8	3	6	1	26	14 700	25 200	25 200	8 500	14 400	3 720	87	250	
		CFT18VA	CFT18VUUA	CFT18VRA	CFT18VUURA															25 280	51 350	26 560	3 500					
20	0 -0.021	CFT20A	CFT20UUA	CFT20RA	CFT20UURA	52	24	20	M20×1.5	21	66	40.5	9	0.8	Rc1/8	4	8	1	36	20 680	34 600	32 140	7 000	23 200	8 230	120	460	
		CFT20VA	CFT20VUUA	CFT20VRA	CFT20VUURA															33 120	64 480	32 140	3 500					
20	0 -0.021	CFT20-1A	CFT20-1UUA	CFT20-1RA	CFT20-1UURA	47	24	20	M20×1.5	21	66	40.5	9	0.8	Rc1/8	4	8	1	36	20 680	34 600	32 140	7 000	21 000	7 150	120	385	
		CFT20-1VA	CFT20-1VUUA	CFT20-1VRA	CFT20-1VUURA															33 120	64 480	32 140	3 500					
24	0 -0.021	CFT24A	CFT24UUA	CFT24RA	CFT24UURA	62	29	24	M24×1.5	25	80	49.5	11	0.8	Rc1/8	4	8	1	40	30 480	52 630	49 500	6 500	34 200	10 500	220	815	
		CFT24VA	CFT24VUUA	CFT24VRA	CFT24VUURA															46 550	92 020	49 500	3 000					
24	0 -0.021	CFT24-1A	CFT24-1UUA	CFT24-1RA	CFT24-1UURA	72	29	24	M24×1.5	25	80	49.5	11	0.8	Rc1/8	4	8	1	40	30 480	52 630	49 500	6 500	39 800	12 900	220	1 140	
		CFT24-1VA	CFT24-1VUUA	CFT24-1VRA	CFT24-1VUURA															46 550	92 020	49 500	3 000					
30	0 -0.021	CFT30A	CFT30UUA	CFT30RA	CFT30UURA	80	35	30	M30×1.5	32	100	63	15	1	Rc1/8	4	8	1	46	45 370	85 060	73 700	5 000	52 600	14 900	450	1 870	
		CFT30VA	CFT30VUUA	CFT30VRA	CFT30VUURA															67 620	144 060	73 700	2 200					
30	0 -0.021	CFT30-1A	CFT30-1UUA	CFT30-1RA	CFT30-1UURA	85	35	30	M30×1.5	32	100	63	15	1	Rc1/8	4	8	1	46	45 370	85 060	73 700	5 000	56 000	56 000	450	2 030	
		CFT30-1VA	CFT30-1VUUA	CFT30-1VRA	CFT30-1VUURA															67 620	144 060	73 700	2 200					
30	0 -0.021	CFT30-2A	CFT30-2UUA	CFT30-2RA	CFT30-2UURA	90	35	30	M30×1.5	32	100	63	15	1	Rc1/8	4	8	1	46	45 370	85 060	73 700	5 000	59 300	59 300	450	2 220	
		CFT30-2VA	CFT30-2VUUA	CFT30-2VRA	CFT30-2VUURA															67 620	144 060	73 700	2 200					

* Without seals, suitable for grease lubrication. In case of oil lubrication, up to 130% of this value shall be permissible, and 70% of this value shall apply for types with seals.

OUTER RINGS TOLERANCE

TYPE	Cylindrical outer ring	Crowned outer ring
CF12	0/-9	0/-50
CF12-1,CF16,CF18,CF20-1	0/-11	0/-50
CF20,CF24,CF24-1,CF30	0/-13	0/-50
CF30-1,CF30-2	0/-15	0/-50

ACCESSORIES

TYPE	
All types	NUT Attached