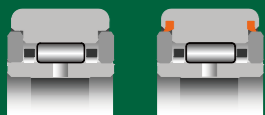


ROLLER FOLLOWERS

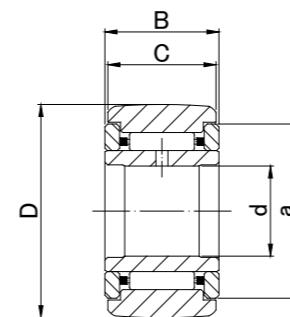
NON SEPARABLE WITH INNER RING



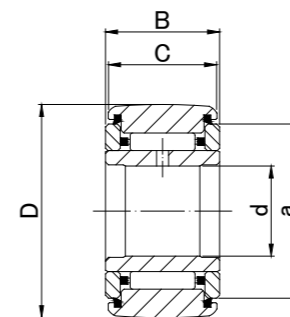
NART..R



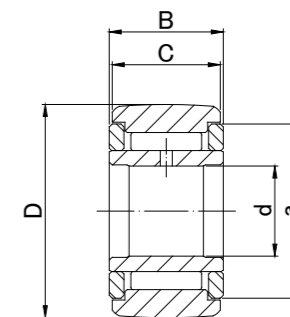
NART..VR



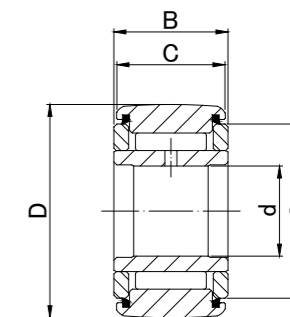
NART..R
NART..X



NART..UUR
NART..UUX



NART..VR
NART..VX



NART..UUVR
NART..UUVX

NART TYPE

Prepacked Grease

Shaft Diameter (mm)	Designation				Dimensions (mm)					Basic dynamic load rating	Basic static load rating	Track load capacity		Limiting speed *	Mass			
	Crowned outer ring R500(≤ NART17) R1000(NART20 ≤)		Cylindrical outer ring		d	D	B	C	a			f/s min	Cr N			Cor N	Crowned outer ring N	Cylindrical outer ring N
	Without seals	With seals	Without seals	With seals														
5	NART 5R	NART 5UUR	NART 5X	NART 5UUX	5 ⁰	16	12	11	12	0.3	3 620	3 720	1 080	3 430	25 000	14.5		
	NART 5VR	NART 5UUVR	NART 5VX	NART 5UUVX	5 ^{-0.008}												8 500	15.1
6	NART 6R	NART 6UUR	NART 6X	NART 6UUX	6 ⁰	19	12	11	14	0.3	4 200	4 700	1 370	4 020	20 000	20.5		
	NART 6VR	NART 6UUVR	NART 6VX	NART 6UUVX	6 ^{-0.008}												7 640	10 300
8	NART 8R	NART 8UUR	NART 8X	NART 8UUX	8 ⁰	24	15	14	17.5	0.3	6 600	7 300	1 860	5 950	17 000	41.5		
	NART 8VR	NART 8UUVR	NART 8VX	NART 8UUVX	8 ^{-0.008}												11 800	15 600
10	NART10R	NART10UUR	NART10X	NART10UUX	10 ⁰	30	15	14	23.5	0.6	8 600	8 300	2 450	7 060	15 000	64.5		
	NART10VR	NART10UUVR	NART10VX	NART10UUVX	10 ^{-0.008}												15 600	18 100
12	NART12R	NART12UUR	NART12X	NART12UUX	12 ⁰	32	15	14	25.5	0.6	9 100	9 200	2 740	7 450	13 000	71		
	NART12VR	NART12UUVR	NART12VX	NART12UUVX	12 ^{-0.008}												16 800	20 500
15	NART15R	NART15UUR	NART15X	NART15UUX	15 ⁰	35	19	18	29	0.6	14 400	17 600	3 140	11 200	10 000	102		
	NART15VR	NART15UUVR	NART15VX	NART15UUVX	15 ^{-0.008}												25 100	36 400
17	NART17R	NART17UUR	NART17X	NART17UUX	17 ⁰	40	21	20	32.5	1	18 600	22 500	3 720	14 400	9 500	149		
	NART17VR	NART17UUVR	NART17VX	NART17UUVX	17 ^{-0.008}												32 000	46 200
20	NART20R	NART20UUR	NART20X	NART20UUX	20 ⁰	47	25	24	38	1	24 100	32 700	7 150	21 000	8 000	250		
	NART20VR	NART20UUVR	NART20VX	NART20UUVX	20 ^{-0.010}												41 700	67 300
25	NART25R	NART25UUR	NART25X	NART25UUX	25 ⁰	52	25	24	43	1	25 800	37 500	8 230	23 200	7 000	285		
	NART25VR	NART25UUVR	NART25VX	NART25UUVX	25 ^{-0.010}												45 500	79 000
30	NART30R	NART30UUR	NART30X	NART30UUX	30 ⁰	62	29	28	50.5	1	36 200	56 900	10 500	33 000	5 500	470		
	NART30VR	NART30UUVR	NART30VX	NART30UUVX	30 ^{-0.010}												59 800	110 400
35	NART35R	NART35UUR	NART35X	NART35UUX	35 ⁰	72	29	28	53.5	1	38 200	62 800	12 900	38 000	5 000	640		
	NART35VR	NART35UUVR	NART35VX	NART35UUVX	35 ^{-0.012}												63 000	121 500
40	NART40R	NART40UUR	NART40X	NART40UUX	40 ⁰	80	32	30	61.5	1	46 200	84 700	14 900	44 400	4 000	845		
	NART40VR	NART40UUVR	NART40VX	NART40UUVX	40 ^{-0.012}												76 200	164 200
45	NART45R	NART45UUR	NART45X	NART45UUX	45 ⁰	85	32	30	66.5	1	49 300	95 200	16 100	47 000	4 000	915		
	NART45VR	NART45UUVR	NART45VX	NART45UUVX	45 ^{-0.012}												80 200	181 100
50	NART50R	NART50UUR	NART50X	NART50UUX	50 ⁰	90	32	30	76	1	51 100	102 300	17 300	50 000	3 500	980		
	NART50VR	NART50UUVR	NART50VX	NART50UUVX	50 ^{-0.012}												84 100	198 000

* Without seals, suitable for grease lubrication. In case of oil lubrication, up to 130% of this value shall be permissible, and 70% of this value shall apply for types with seals.

OUTER RINGS TOLERANCE (Outside diameter) (μm)

TYPE	Crowned outer ring	Cylindrical outer ring
NART5	0/-50	0/-8
NART6,NART8,NART10	0/-50	0/-9
NART12,NART15,NART17,NART20	0/-50	0/-11
NART25,NART30,NART35,NART40	0/-50	0/-13
NART45,NART50	0/-50	0/-15